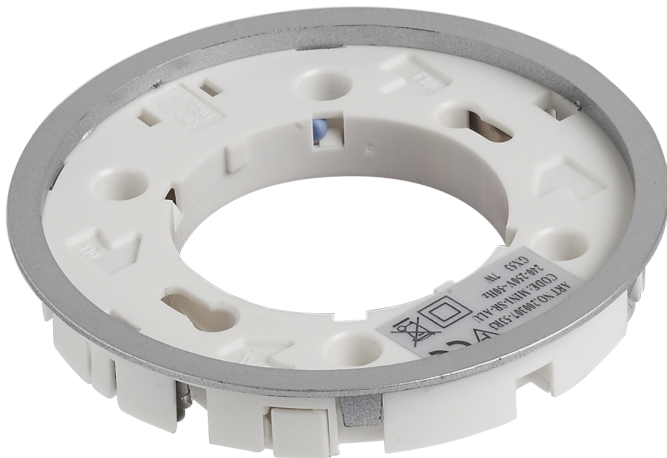


Product Data Sheet

Semi recessed straight GX53 fitting bare end

Part No: **MINI-SR-ALU**

- Lamp not included
- 1.5m bare ended lead or with mini plug





Technical Specification

Part No	MINI-SR-ALU
Finish	Satin Silver
Voltage	240
Lamp Holder	GX53
Lamp Included	N
Connector Type	Bare End
Depth	13
Diameter	85
Cut Out	78
Class 1 or 2 or 3	II
Material / Made From	Plastic
EAN	5055530801073
Price per	each
Unit of sale	1
Notes	
Price	each